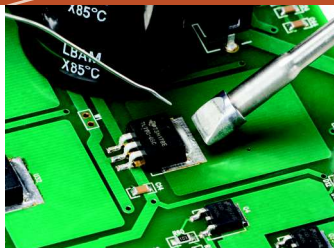
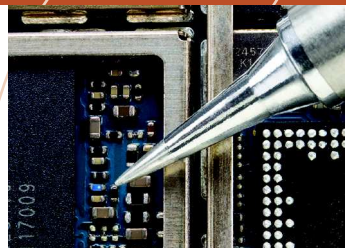


The
ADS200
AccuDrive™ Production
Soldering Station



Solutions and systems for soldering, rework and repair of electronics

PAGE[®]
paceworldwide.com

Introducing the ADS200 Production Soldering Station

Standard or Optional ISB Tool Stand

Instant SetBack (ISB) automatically lowers temperature when iron is in the Stand to extend tip life and save energy.

Temperature Presets

Easily scroll between 3 user-definable, preset temperatures.

Digital LED Display

Viewable at all angles.

Simple Operation

Power on, set the temperature with the arrow keys and start soldering.

Wide-Angled Design

Allows easy insertion and removal of the TD-200 Iron, yet holds it securely.

Wet & Dry Cleaners

The Tool Stand incorporates a sponge and non-abrasive brass wool.

ESD-Safe*

Meets ANSI/ESD S13.1-2015 and 20.20 specifications.

Rugged, All Metal Construction

The Housing, Tool Stand and TD-200 Iron endure extreme, multi-shift production use.

No Calibration Required

AccuDrive™ absolute temperature accuracy eliminates the need for routine, costly calibration.



* ANSI/ESD S13.1-2015 provides test methods for measuring current leakage, tip-to-ground reference point resistance, and tip voltage for soldering equipment. Unlike Curie point/RF induction-based soldering systems, the ADS200 passes the peak voltage test with flying colors!

Driven by new AccuDrive™ Control Technology

Accurate tip temperatures with maximum heat delivery!



AccuDrive™ continuously monitors tip temperature, providing instantaneous load sensing and on-demand power to quickly reflow solder joints at low, safe temperatures, without the need to calibrate.

How It Works

At the heart of the ADS200 lies PACE's new AccuDrive™ Technology. AccuDrive™ allows you to set honest, highly-accurate temperatures, *without* the need to change cartridges or calibrate. Its advanced electronics provide instantaneous load sensing and on-demand power to quickly reflow solder joints at safe, low temperatures, regardless of the mass of the application.

Unbeatable Results

AccuDrive™ delivers consistent, repeatable results in both light and heavy-use environments and provides the operator with the flexibility that is essential in today's demanding production operations. Regardless of your application, AccuDrive™ delivers unsurpassed thermal performance, productivity and bottom-line cost savings!

TD-200 AccuDrive™ Tip-Heater Cartridge Iron

Beneath its sleek dimensions, comfortable ergonomics and cool touch, the TD-200 makes continuous production soldering effortless!

AccuDrive™ Tip-Heater Cartridges

Provide accurate tip temperatures, instant heat-up/recovery, and high-capacity heating—all at safe, low temperatures.

Cool Touch™ Grip

Aluminium handle stays cool and comfortable even during extended production use.

Versatile & Flexible

Works safely on 0201's, sensitive flex circuits or the highest mass, lead-free PCBs.

Burn-Resistant Cord

ESD-safe cord is soft and flexible, withstanding direct contact with hot tips.

Ultra-Short Tip-to-Grip

Under 1.9"/48mm for precision operator dexterity when used under a magnifier or microscope.

Comfortable & Ergonomic

Slim & lightweight, dramatically reduces grip stress and operator fatigue, enhancing productivity.

ESD-Safe Design

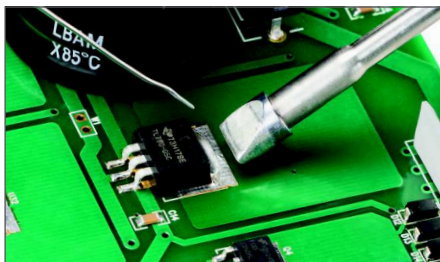
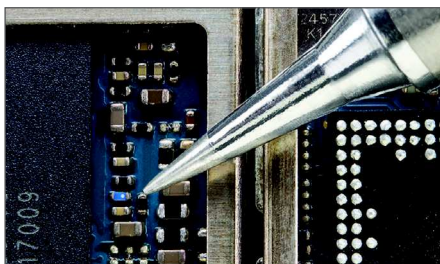
From tip to the end of the cord, the TD-200 protects your ESD-sensitive devices.



Stays Cool All Day

AccuDrive™ Blue Series Tip-Heater Cartridges

New PACE AccuDrive™ technology combines a high-accuracy sensor and powerful heat generation in one low-cost tip cartridge!



Solder the most delicate 0201 components, or highest mass components & PCBs.

Inexpensive Cartridges:

Less than half the price of most cartridge style or curie point tips, delivers lowest cost of ownership.

One Tip Geometry, Any Temperature:

Unlike with curie point tips, select any temperature for a chosen tip cartridge without having to buy additional ones.

Accurate, Honest Temperatures:

Consistent, accurate tip temperatures meet or exceed J-STD-001 requirements.

High Capacity Integrated Heater:

Delivers up to 120 Watts of pure power.

Superior Heat Transfer/Delivery:

Allows for safer, lower temperatures, reduces risk of PCB damage and improves tip life.

Hot-Swappable Quick-Change Tips:

Fast & easy change-out within 2 seconds, without turning the unit off.

Fast Initial Heat-Up:

Achieves set temperature in seconds.

Wide Variety of Tip Geometries Available:

For the most delicate micro-soldering to challenging, high thermal mass applications.

AccuDrive™ Blue Series Tip-Heater Cartridges



Standard Tips*

For delicate micro-soldering to challenging, high thermal mass applications

Tip	Description	Part Number	Tip	Description	Part Number
	1/32" Conical Sharp Extended (0.80mm)	P/N 1130-0001-P1		1/16" 30° Chisel (1.59mm)	P/N 1130-0019-P1
	1/64" Conical Sharp (0.40mm)	P/N 1130-0002-P1		1/8" 90° Chisel (3.18mm)	P/N 1130-0020-P1
	1/64" Conical Sharp Bent 30° (0.40mm)	P/N 1130-0003-P1		1/16" 30° Bent Chisel (1.59mm)	P/N 1130-0026-P1
	1/64" Conical Sharp Extended (0.40mm)	P/N 1130-0004-P1		MiniWave® (3.05mm)	P/N 1130-0032-P1
	3/64" 30° Chisel (1.20mm)	P/N 1130-0008-P1		Angled MiniWave® (3.05mm)	P/N 1130-0033-P1
	13/64" Extra Large Chisel (5.15mm)	P/N 1130-0010-P1		Angled MiniWave® (2.11mm)	P/N 1130-0035-P1
	1/64" 60° Bevel (0.40mm)	P/N 1130-0011-P1		1/128" Conical (0.20mm)	P/N 1130-0036-P1
	1/32" 30° Chisel (0.80mm)	P/N 1130-0012-P1		1/4" Flat Blade (6.35mm)	P/N 1130-0037-P1
	3/32" 30° Chisel (2.38mm)	P/N 1130-0013-P1		1/128" Conical, Special (0.20mm)	P/N 1130-0050-P1
	3/64" 30° Bent Chisel (1.20mm)	P/N 1130-0016-P1		1/8" 30° Chisel (3.18mm)	P/N 1130-0051-P1



Ultra-Performance Tips*

Optimised tip geometries and increased thermal pipeline deliver maximum heat throughput

Tip	Description	Part Number	Tip	Description	Part Number
	1/32" Conical Sharp Ext. (0.80mm)	P/N 1131-0001-P1		1/8" 30° Chisel (3.18mm)	P/N 1131-0051-P1
	1/64" Conical Sharp (0.40mm)	P/N 1131-0002-P1		1/16" Chisel (1.59mm)	P/N 1131-0052-P1
	1/64" Conical Sharp Bent 30° (0.40mm)	P/N 1131-0003-P1		1/8" Chisel (3.18mm)	P/N 1131-0053-P1
	3/64" 30° Chisel (1.20mm)	P/N 1131-0008-P1		3/16" Chisel (4.78mm)	P/N 1131-0054-P1
	13/64" Chisel (5.15mm)	P/N 1131-0010-P1		1/4" Chisel (6.35mm)	P/N 1131-0055-P1
	1/32" 30° Chisel (0.80mm)	P/N 1131-0012-P1		9/32" Chisel (7.14mm)	P/N 1131-0056-P1
	3/32" 30° Chisel (2.38mm)	P/N 1131-0013-P1		5/16" Chisel (7.95mm)	P/N 1131-0057-P1
	1/16" 30° Chisel (1.59mm)	P/N 1131-0019-P1			
	MiniWave® (3.05mm)	P/N 1131-0032-P1			
	1/4" Knife Blade (6.35mm)	P/N 1131-0037-P1			

* Other tips geometries available upon request. Contact sales@paceworldwide.com for further information.